

PHIL RIISE  
PRESIDENT

SEAVIEW BOATYARD & YACHT  
SERVICE



Seaview Boatyard

# Environmental Leadership in a Highly Regulated Industry



Seaview Boatyard



Seaview Boatyard

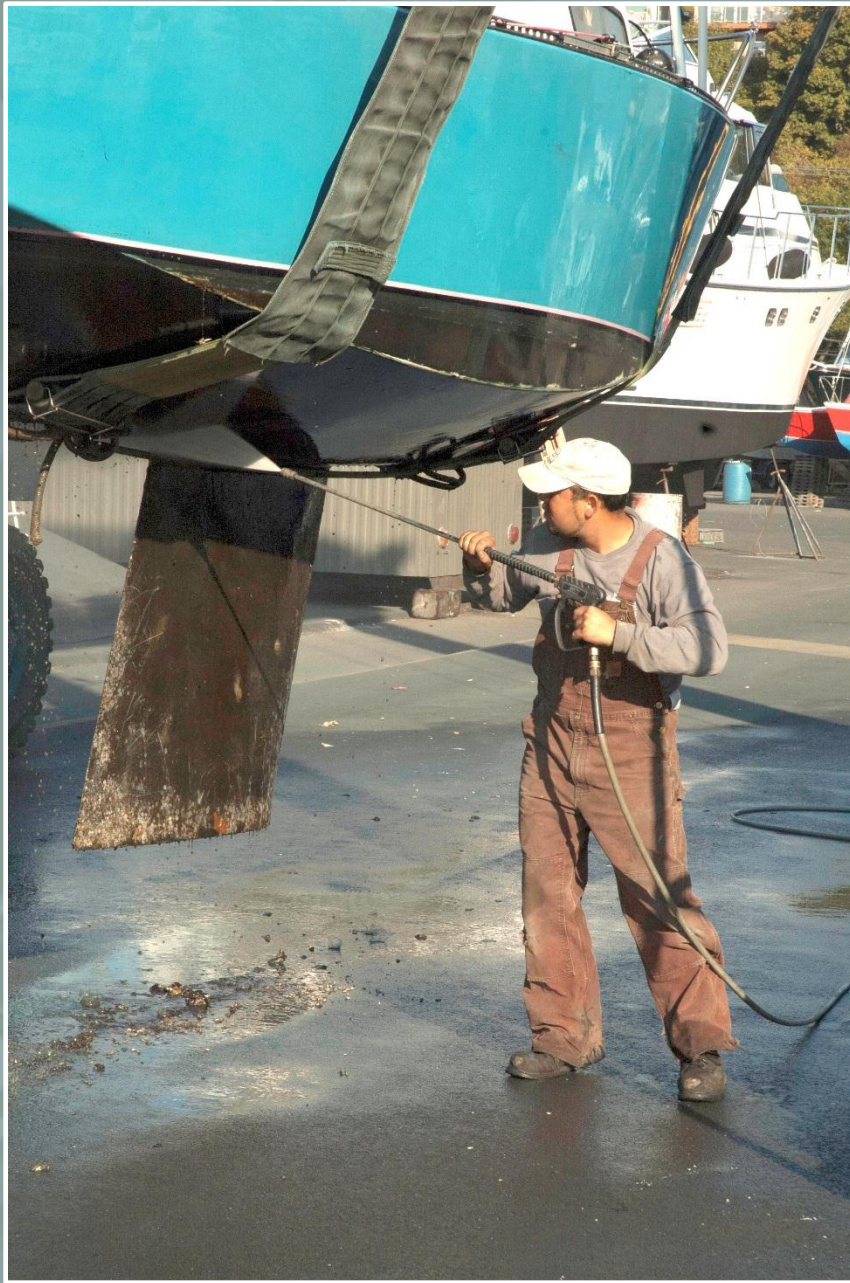


Seaview Boatyard



Seaview Boatyard

BELLINGHAM





Seaview Boatyard







Seaview Boatyard

BOATYARD & YACHT SERVICE  
SEATTLE • BELLINGHAM



## **BEST MANAGEMENT PRACTICES (BMPs)**

### EVERYONE MUST COMPLY

1. All bottom paint prep work, spray painting or sand blasting must be performed by Seaview Boatyard personnel.
2. No wet sanding or scrubbing of bottom paint at any time.
3. Grinding and power sanding above the waterline must be contained by tenting (no fugitive dust) or performed with approved vacuum sander. **Only Seaview personnel may grind or sand bottom paint.**
4. Boat stalls must be swept or vacuumed daily. Do not hose down stalls. Based on job scope, ground tarping may be required.
5. Contact yard store for disposal of all hazardous materials including oil, fuels, solvents, anti-freeze, bilge water, ballast water, and gray water.
6. All paint cans, brushes, rollers, roller trays, etc. **must** be in a containment tray. Trays are available for loan in the yard store. Cans should be sealed at all times, not left open during job.

**NON COMPLIANCE WITH BMPs WILL RESULT IN A MINIMUM \$500 FINE**

**IMMEDIATELY REPORT ANY HAZARDOUS MATERIAL SPILLS TO YARD STORE OR YARD OFFICE FOR ASSISTANCE AND SPILL CONTAINMENT KIT**

**DO NOT SHIFT STANDS PADS OR BLOCKING**

Use of secondary containment trays is required for all paint cans.  
Trays are available at the yard store.



Seaview Boatyard





**DO NOT SHIFT STANDS,  
PADS, OR BLOCKING.**



**SEAVIEW BOATYARD BMPs**

- 1. STALLS MUST BE CLEANED DAILY.** Do not hose down stalls.
- 2. No grinding or power sanding without a tent.**
- 3. No wet sanding or scrubbing of bottoms.**
- 4. Contact yard store for handling and disposal of all gray water or hazardous materials.**
- 5. Report any hazardous material spills to yard office immediately.**

**NO POWER TOOLS 6:00pm - 8:00am**

**STORM WATER  
EMERGENCY  
SHUT OFF  
VALVE**

**LOCATED 30' EAST**





Seaview Boatyard







Seaview Boatyard

BELLINGHAM



Seaview Boatyard



Seaview Boatyard

BELLINGHAM



Seaview Boatyard

Two generations of commitment to environmental leadership, recognized by agencies and organizations throughout Washington.



Seaview Boatyard